

WILTSHIRE POLICE

CPT Area Board Briefing Marlborough

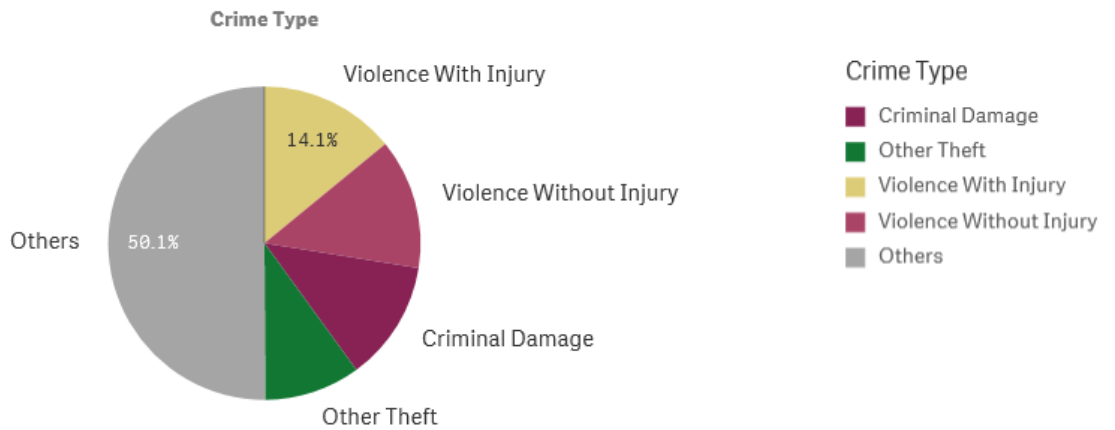


Our purpose: To keep people safe and protect our communities

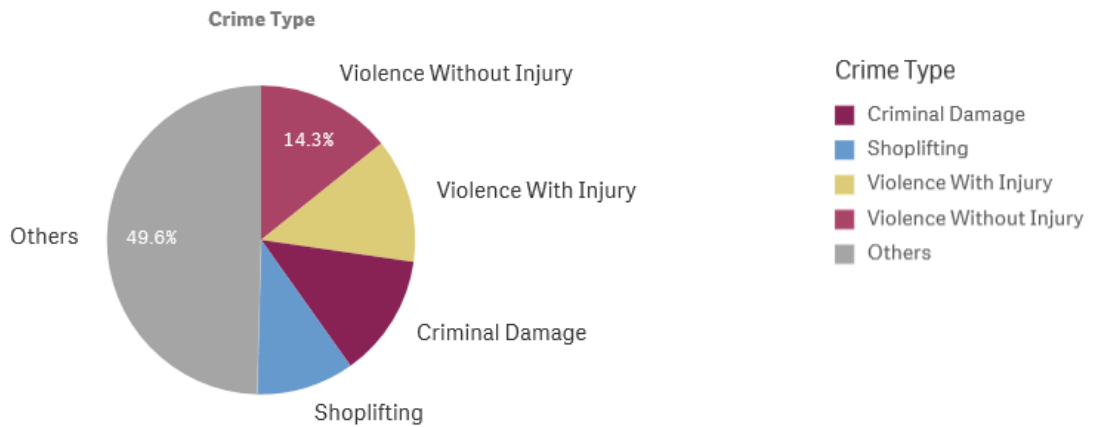
June 2019

PERFORMANCE

Your Area - Five Highest Crime Groups (Previous 12 months)



Force Area - Five Highest Crime Groups (Previous 12 months)



Wiltshire East CPT - crime and incident demand for the 12 months to June 2019

WILTSHIRE POLICE

CPT Area Board Briefing - Marlborough



Our purpose: To keep people safe and protect our communities

June 2019

Force-wide

- Wiltshire Police has reduced the volume of recorded crime by 1% in the 12 months to May 19 and continues to have one of the lowest crime rates in the country.
- Our service delivery remains consistently good.
- In June, we received 8,502 999 calls which we answered within 4 seconds on average and 13,096 101 calls which we answered within 1 minutes 10 seconds on average.
- In June, we also attended 1,571 emergency incidents within 11 minutes and 5 seconds on average.
- Wiltshire Police has seen a 26% reduction in vehicle crime and 20 per cent in burglary in the 12 months to June 2019. These are the most improved trends in the country.
- The Crime Survey of England & Wales recently ranked Wiltshire as one of the top forces nationally for public confidence. It covers the 12 months to December 2018 The publication can be found here:
WWW.CRIMESURVEY.CO.UK

For more information on Wiltshire Police's performance please visit:

PCC's Website - <https://www.wiltshire-pcc.gov.uk/article/1847/Performance>

HMICFRS Website - <https://www.justiceinspectors.gov.uk/hmicfrs/police-forces/wiltshire/>

Police.uk - <https://www.police.uk/wiltshire>

WILTSHIRE POLICE

CPT Area Board Briefing - Marlborough

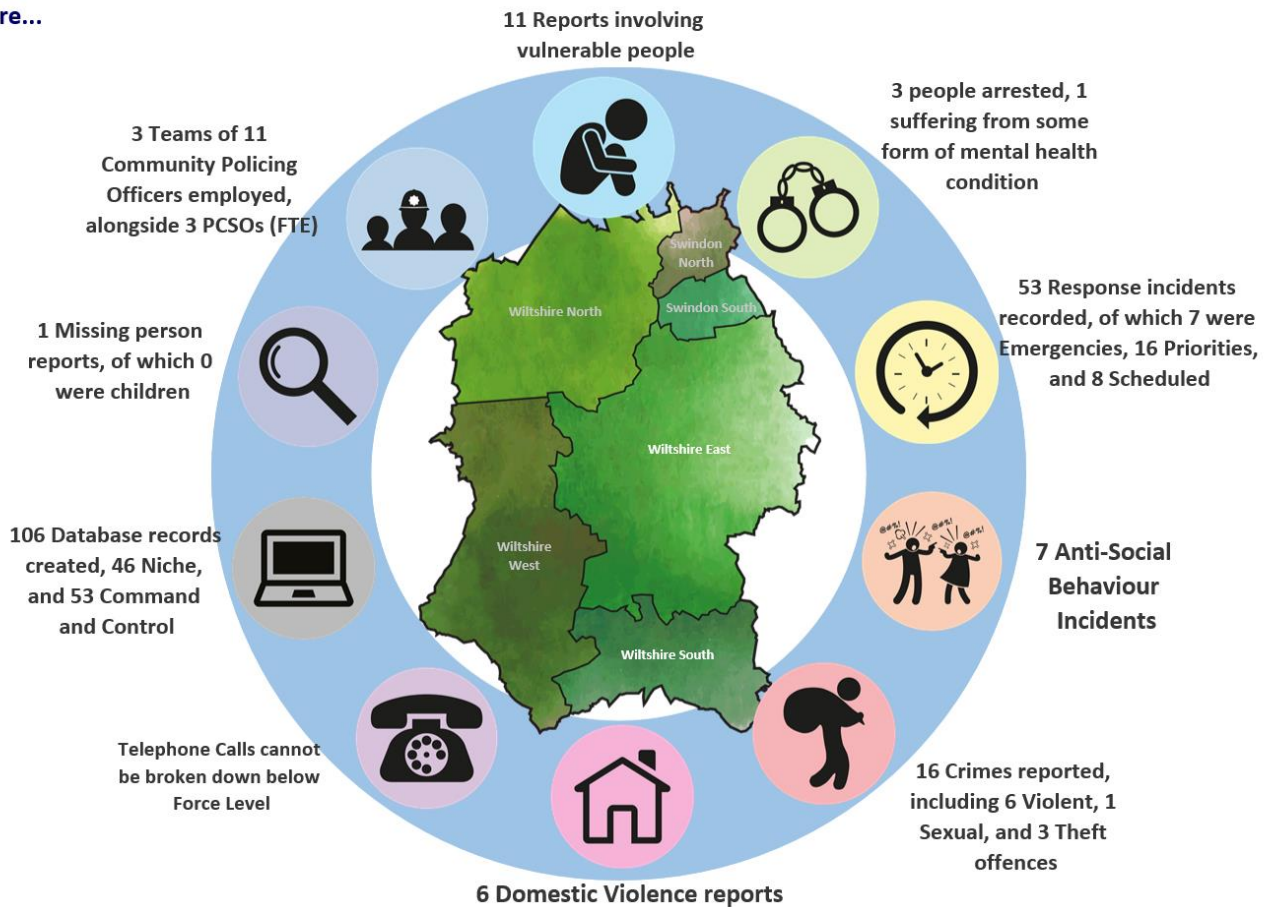


Our purpose: To keep people safe and protect our communities

June 2019

Area specific

On an average day in Wiltshire East there were...



Wiltshire East CPT Demand Overview – 12 months to June 2019

WILTSHIRE POLICE

CPT Area Board Briefing - Marlborough



Our purpose: To keep people safe and protect our communities

June 2019

CPT UPDATES:

Staffing News:

We now have two Community Co-ordinators for East Wiltshire CPT, with PC Emily GRIGOR covering Marlborough & Pewsey and PC Beth BUTWELL covering Devizes.

Their role is to tackle longer term problems, increase effective visibility in the community and ensure effective community engagement.

Community events:

PCSO BRAITHWAITE has been Patrolling the London Road area of Marlborough today over concerns of 'Nottingham Knockers' - This is the term used for people out door to door selling without the correct permit to do so issued by the Police. Please call us if you are concerned about anyone coming to your door. We have today had complaints of males selling dish cloths and household cleaning items. 1 male has been arrested.



WILTSHIRE POLICE

CPT Area Board Briefing - Marlborough



Our purpose: To keep people safe and protect our communities

June 2019



PCSO's SKYES & BRAITHWAITE patrolling St Marys School.

MARLBOROUGH CRIME STATISTICS FROM 01/06/2019 – 30/06/2019:

- 3 REPORTS ASB
- 6 REPORTS OF BURGLARY
- 4 REPORTS OF DRUG OFFENCES
- 23 REPORTS OF THEFT
- 24 REPORTS OF VIOLENT CRIME
- 9 REPORTS OF CRIMINAL DAMAGE
- 4 REPORTS OF PUBLIC ORDER
- 4 REPORTS OF VEHICLE OFFENCES

WILTSHIRE POLICE

CPT Area Board Briefing - Marlborough



Our purpose: To keep people safe and protect our communities

June 2019

YOUR CPT – Wiltshire East



A/Inspector 2334 Pete FOSTER:

Wiltshire East Inspector

2334@wiltshire.pnn.police.uk



PC 2802 Beth BUTWELL:

Wiltshire East Co-ordinator Devizes

2802@wiltshire.pnn.police.uk



PCSO 6015 Paula YARRANTON:

Devizes Town

6015@wiltshire.pnn.police.uk



PCSO 6093 Jonathan MILLS:

Devizes Town

6093@wiltshire.pnn.police.uk



PCSO 6169 Kelly WATTS:

Devizes Town

6169@wiltshire.pnn.police.uk



PCSO 8229 Georgie DODD:

Devizes Rural

8229@wiltshire.pnn.police.uk



PCSO 6195 Lucy STONESTREET:

Devizes Rural

6195@wiltshire.pnn.police.uk

You can find out more about Wiltshire East CPT, including news stories and contacts for local officers, on our website:

www.wiltshire.police.uk/WiltshireEast

WILTSHIRE POLICE

CPT Area Board Briefing - Marlborough



Our purpose: To keep people safe and protect our communities

June 2019

LOCAL PRIORITIES

PRIORITIES FOR WILTSHIRE EAST CPT:	UPDATE
Priority 1: <u>ANTISOCIAL BEHAVIOUR</u>	
<p><u>Marlborough:</u> Priory Gardens – Drug use & anti-social behaviour Skate Park & Car Park – Drug use & vehicle anti-social behaviour</p>	CONTINUED HIGH VISIBILITY PATROLS OF THE AREAS
Priority 2: RURAL CRIME: HARECOURSING AND BEAUTY SPOT THEFTS	
<p>It is imperative that we maintain a high visible presence within our rural county. As summertime is fast approaching, we anticipate an increase in visitors to both our Beauty Spot areas and countryside.</p> <p>We will be aiming to regularly patrol our Beauty Spots and our rural sites that unfortunately do become a target of vehicle and rural crime.</p> <p><u>ADVICE:</u></p> <p>It is important for members of the public not to leave any valuables within their vehicles. It is also important for members of the Public to report any suspicious activity to us via 101 or 999 if it is a crime in progress.</p>	<p>HIGH VISIBILITY PATROLS IN THE MOST VULNERABLE AREAS</p> <p>2 REPORTED BEAUTY SPOT THEFTS IN MARLBOROUGH IN JUNE 2019;</p>
Priority 3: VEHICLE CRIME AND COMMUNITY SPEED WATCH	
<p>Keeping our roads safe is extremely important within our area as we have several A Roads that pass through our County.</p> <p>We will be receiving fortnightly updates from our Community Speed Watch Teams with specific areas to target. It is important that we work with the general public to identify unsafe road users within our county. We hope to show how hard we will be working to target the roads through our Social Media updates and cooperation with Community Speed Watch Schemes.</p>	<p>We have conducted speed checks in the following areas over the last two months: BEECHINGSTOKE, LONDON ROAD – MARLBOROUGH, RUSHALL, WORTON; OARE, SOUTH STREET – ALDBOURNE, WHITTONDITCH, ROWDE, UPAVON, NURSTEED ROAD – DEVIZES.</p>

WILTSHIRE POLICE

CPT Area Board Briefing - Marlborough



Our purpose: To keep people safe and protect our communities

June 2019

Priority 4: BURGLARIES

We have seen an increase in reports of both domestic and commercial burglaries within the Marlborough area.

ADVICE FOR COMMERCIAL PREMISES:

- Removing high value goods from window displays and leave the till open - by leaving the till visible, open and clearly empty, any burglars seeking cash are likely to lose interest.
- Install dusk-to-dawn lighting at any entrance to the property that is overlooked and by securing high risk display cabinets, such as for tobacco displays, with protective grilles and shutters.
- Bank your cash - If you do not leave cash in the store overnight it cannot be stolen in a burglary. Night safe facilities are available after opening hours. If you do not use a specialist cash collection agency be sure you vary the route you take to the bank and the times you leave the shop.
- Doors and windows are particularly vulnerable - use security-rated products to make them more burglar-resistant. For more details visit Secure by Design.

ADVICE FOR DOMESTIC PREMISES:

- Lock your doors and windows every time you leave the house, even when just in the garden and never leave a spare key in a hiding place like in a plant pot or letter box - a thief knows all the hiding places
- Register all serial numbers from electrical items, tools and garden equipment with Immobilise.com the free national property register. Mark items without serial numbers with an artificial DNA property marker such as Smartwater or SelectaDNA.
- Use a timer to set lights to mimic your usual activity when you are not at home.
- Do not open the door to anyone you don't know or are not expecting. Always check by using a spy-hole or look through a window. Don't trust an ID card.
- Always report any suspicious activity, note any vehicle registrations, descriptions of persons involved and direction of travel.
- Consider installing a monitored burglar alarm, and only use a company that is registered or certified with the NSI or the SSIAB.
- Take photographs of all jewellery including hallmarks and keep them safe. Make sure that you have up to date contents insurance.
- Keep all keys, purses and wallets out of sight and away from the letterbox.

HIGH LEVEL PCC UPDATES

WILTSHIRE POLICE

CPT Area Board Briefing - Marlborough



Our purpose: To keep people safe and protect our communities

June 2019

- **Improvement in 101 performance** - Concerns had been raised in the past from the public around the time it takes to get through to 101. I'm pleased to say that following investment into the call centre, performance has improved significantly. The time it takes to answer a 101 call has improved from just over 5 minutes in 2017 to 1 minutes 4 seconds at the start of this year. The proportion of times that a caller simply hangs up before being dealt with has also improved from 17 per cent to 4.8 per cent.
- **Recruitment** - As part of my promise when the policing precept was increased for this financial year, 12 additional Community Coordinators will be in place across the county next month helping our Community Policing Teams to put a renewed focus on visibility and community engagement.
- **National Armed Forces Day** – There has been a number of events across the county to celebrate Armed Forces Day with Salisbury hosting the national event this year. Alongside the Force I'm pleased to support these and at the end of June Wiltshire Police signed the military covenant with a commitment to employing those relocated as part of the Army's re-basing programme.

HIGH LEVEL FORCE UPDATES

- **Summer demand campaign** - We are now moving into the time of year where police forces traditionally see a spike in demand. The warmer weather, school holidays and increased socialising, means we are expecting to see a significant increase in 999 and 101 calls. To try to counter this, we will be running a summer publicity campaign designed around key crime prevention messages.
- **Drink Driving** – The annual drink driving campaign will be launching soon. This will see a focus on educating the public about the dangers of getting behind the wheel after having a drink.
- **Awards** – We have recently been celebrating the bravery, dedication and hard work of police officers, staff, volunteers and members of the public at the Wiltshire Police Awards Ceremony. You can read more, including some of the heart-warming stories from the night, on our website <https://www.wiltshire.police.uk/Features>

GET INVOLVED

- You can keep up to date with the latest news in your area by signing up to our Community Messaging service – www.wiltsmessaging.co.uk and here www.wiltshire-pcc.gov.uk
- You can follow your CPT on social media <https://www.wiltshire.police.uk/Followus>
- More information on your CPT area can be found here:

[ww](#)